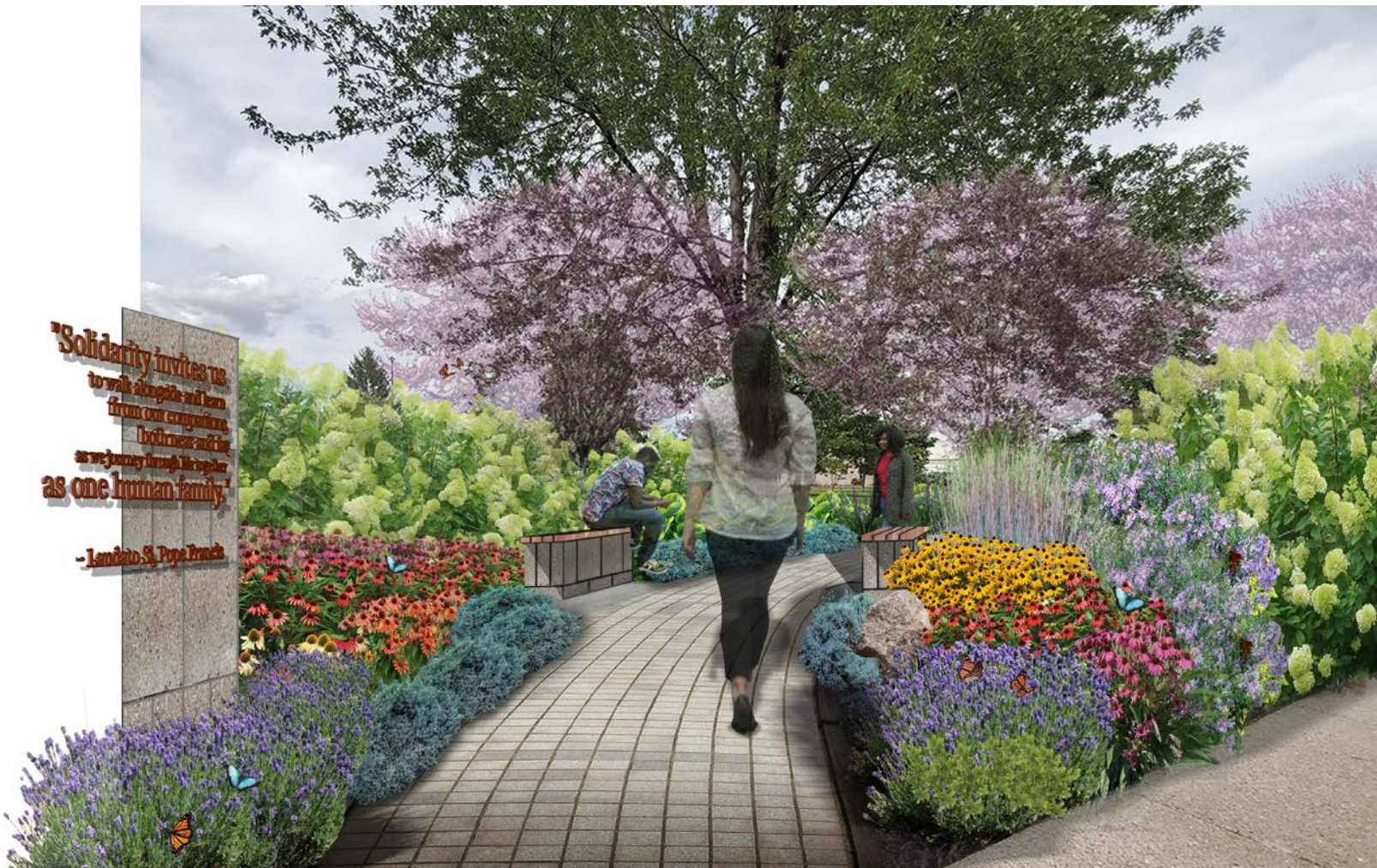


2020

DETROIT COLLABORATIVE DESIGN CENTER Annual Report



02

DIRECTORS' LETTER

Over the last year at the Detroit Collaborative Design Center (DCDC) at the University of Detroit Mercy, we have been busy working alongside our community partners to redefine community-engaged design within the constraints of COVID-19 and reaffirm the focus on social justice and racial equity in our practice. The immense loss and challenges of 2020 reinforced the critical importance of working in partnership toward a just and equitable built environment that centers community resilience, which is at the core of DCDC's work.

Together with our partners, we developed new analog and digital engagement strategies to safely ensure ongoing engagement in neighborhood-based design and planning processes. We also had the opportunity to share these lessons and learn from our peers navigating this unforeseen challenge both locally and nationally. We believe that this work will deepen our engagement approach into the future. We also believe that meaningful community-engaged design contributes to more equitable communities, ensuring that residents and other stakeholders have ownership in the decision-making that impacts their neighborhood spaces. In 2021 we are looking forward to projects with new and longtime partners that continues to work toward spatial justice. COVID permitting, we are eager to launch new programs that support a more diverse design field.

As we do every semester, DCDC also had the privilege of welcoming Detroit Mercy School of Architecture student designers into our office community in 2020. We are so thankful for their passion and commitment to the work of community-engaged design. We are similarly thankful to our ever-amazing community partners, with whom we have navigated this year, and our funding partners that make this collective work possible.




Ceara O'Leary


Christina Heximer

OUR TEAM

Current DCDC Staff

Josh Budiongan, Designer & Project Manager
Charles Cross, Director of Landscape Design
Toni Henry, Designer & Project Manager
Christina Heximer, Co-Executive Director
Julia Kowalski, Designer & Project Manager
Brigette Murphy, Business Manager
Ceara O'Leary, Co-Executive Director

2020 Emerging Designer

Raquel Charrier

2020 Student Designers

Philip Jurkowski
Neteya Tavernier
Joseph Loria
Farinaz Asghari Torkamani
Maria Jose
Allison Jia Yu
Emmanuel Pillah
Galal Abdullah



Josh Budiongan



Charles Cross



Toni Henry



Julia Kowalski

04

HOW WE WORK

Mission

The Detroit Collaborative Design Center (DCDC) is a multi-disciplinary, nonprofit design center located in the University of Detroit Mercy's School of Architecture. DCDC exists to bring high-quality and community-engaged design to all neighborhoods in Detroit. We do this by engaging, educating and promoting equity in design processes and outcomes.

Vision

Every person has access to well designed, healthy spaces and neighborhoods and has an active role in the decision-making that impacts their community.

Services

We work with community partners citywide on a range of projects at different scales, prioritizing participation in the planning and design process with the belief that local expertise leads to the best ideas.

Our services include:

- Architectural design
- Landscape design
- Urban design
- Neighborhood planning
- Infrastructure strategy
- Community engagement
- Capacity building
- Small scale installation design

Our Office Values

- Meaningful, authentic engagement that celebrates local expertise
- Equitable spaces and sustainable solutions that prioritize quality design and access for everyone
- Collaboration built upon partnerships and relationships
- Celebrate histories, local culture, and stories of staff and partners
- Educating designers and supporting diversity in design professions
- Local capacity building
- Public interest design research and knowledge sharing
- Professional development and growth opportunities
- Healthy, mindful office culture
- Foster creativity, fun and playfulness

OUR OFFICES

We have expanded over the last couple years and now have a second home at Neighborhood HomeBase on McNichols Rd, which we share with the Live6 Alliance. In 2020 we also expanded our footprint to work from home.

1994-PRESENT
University of Detroit Mercy
School of Architecture



2019- PRESENT
Neighborhood HomeBase



MUCH OF 2020
Zoom



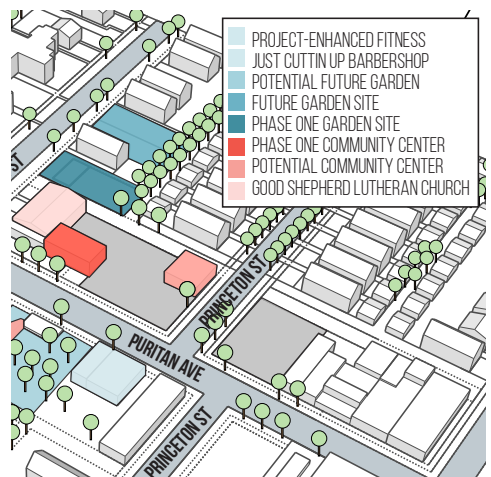
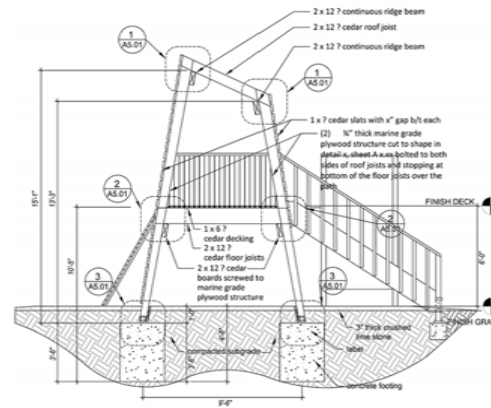
06

IN 2020 WE WORKED ON 16 PROJECTS AND INITIATIVES WITH A RANGE OF COMMUNITY PARTNERS ACROSS DETROIT (AND SOMETIMES BEYOND)

Each project is included on the following pages, along with collaborating partners. We apologize if we unintentionally omitted anyone!

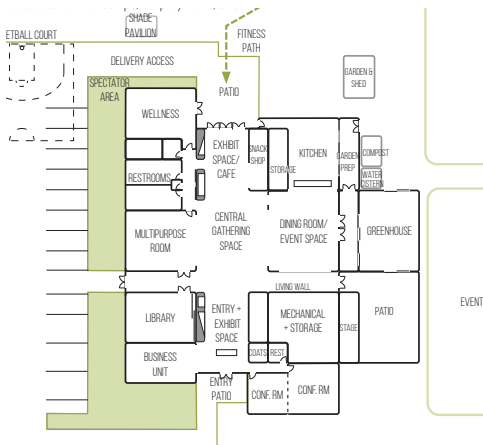
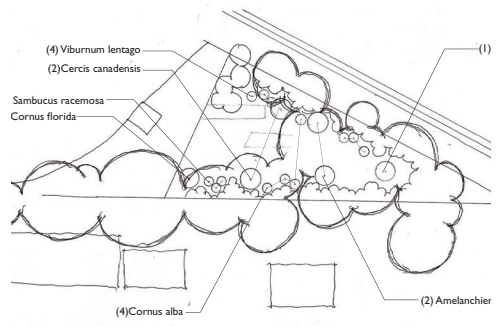
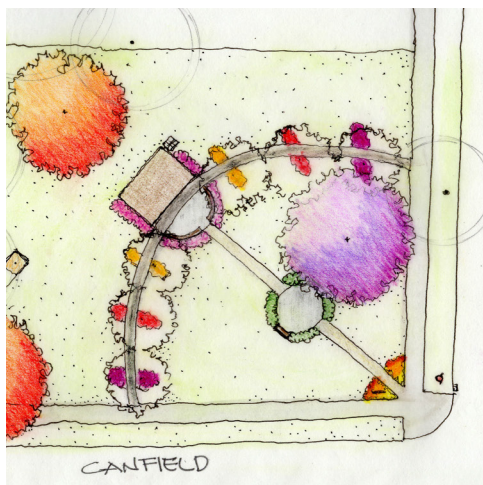
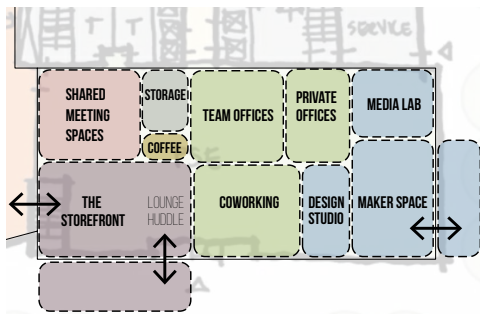
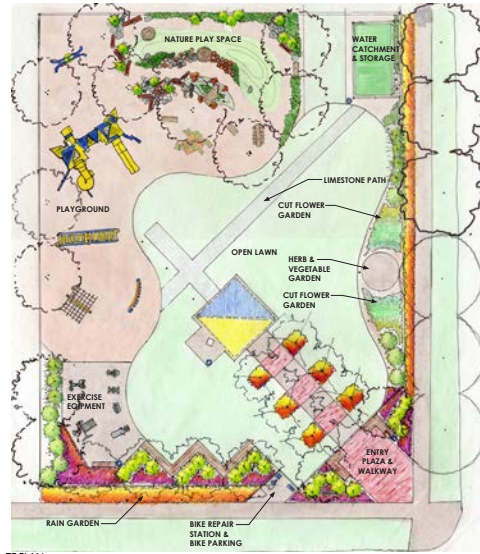
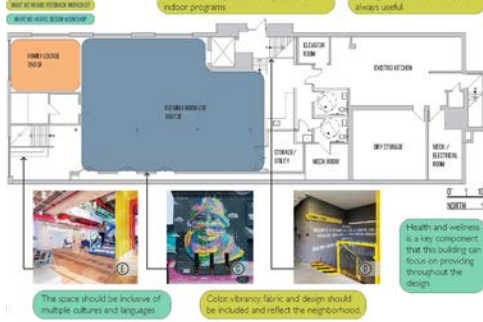
THESE PROJECTS INCLUDE:

- Landscape design
- Urban design
- Architectural design
- Community engagement
- Capacity building



FIRST FLOOR PLAN

OPTION B



08

ARCHITECTURAL, LANDSCAPE + URBAN DESIGN

360 Detroit Park

360 Detroit Park will be a transformational outdoor community space in the heart of Detroit's Virginia Park neighborhood. It will be a neighborhood anchor that provides space for a wide range of community activities for all ages. 360 Detroit engaged the community and youth to develop ideas for the park. DCDC facilitated workshops with residents to gain feedback. The resulting design includes elements and areas for all age groups to play and exercise and space for the neighborhood to come together as a whole.

Partner: 360 Detroit, Inc.

3700 Gilbert Building Community-Engaged Programming + Conceptual Design

The Vera and Joseph Dresner Foundation recently acquired a community building located at 3700 Gilbert Street, which they are in the process of transforming into a Neighborhood Resource Center housing a number of community-facing programs informed by community partners. DCDC and the Foundation embarked on a series of workshops with community leaders that defined the building program and conceptual design, providing the basis for forthcoming design phases.

Partner: Vera and Joseph Dresner Foundation



Kadima Mental Health Services Clubhouse Interior Rendering

Black Bottom Park Conceptual Design

Black Bottom Park is a vision for the open space adjacent to Vanguard CDC's offices on East Grand Boulevard, along Hastings Street. The conceptual design proposes a community event and performance space framed by legacy trees, areas to celebrate art and local businesses, and seating areas for neighbors.

Partner: Vanguard CDC

North Central + Brightmoor Tree House Design Development + Construction Documents

DCDC worked with Brilliant Detroit and neighborhood stakeholders in two Detroit neighborhoods, North Central and Brightmoor, to design outdoor community spaces adjacent to Brilliant Detroit's houses. Following conceptual design, DCDC developed construction drawings for both landscapes and structures.

Partners: Brilliant Detroit, Ron Omilian



We grow food year round in the heated greenhouse for lunches and snacks. There are also fruit trees and a large vegetable garden.

Canfield Consortium Landscape + Pavilion

DCDC worked with the Canfield Consortium to design and community gathering space to complement and anchor their existing efforts along East Canfield. The design includes a circular walk inviting people into the landscape, as well as a pavilion for performances, students and neighbors. The project included early engagement and initial concept, extending to construction documents.

Partner: Canfield Consortium

Clubhouse Engagement + Conceptual Design

Kadima partnered with DCDC to develop a building and site program, site selection criteria, and conceptual design. DCDC also worked with researchers at Wayne State University's Department of Educational Psychology who specialize in the clubhouse model and spoke with national experts with Clubhouse International to better understand clubhouse facilities and to inform the program and design. DCDC developed and facilitated an engagement process to inform space programming, site selection criteria, and the conceptual design.

Partners: Kadima Mental Health Services, Wayne State University Department of Educational Psychology, Clubhouse International

Detroit Horse Power Fenkell and Linwood Site Participatory + Conceptual Design

Detroit Horse Power's vision is to repurpose a large parcel of vacant land in Detroit to construct a new urban horseback riding center that will house youth programs. DCDC worked with DHP and key stakeholders to develop the conceptual design for the site, which will include stables, indoor and outdoor riding arenas, and paddocks for the horses to get outside and graze every day.

Partners: Detroit Horse Power, Proxy

10

Nardin Park Outdoor Community Hub Schematic Design + House Space Program Concept

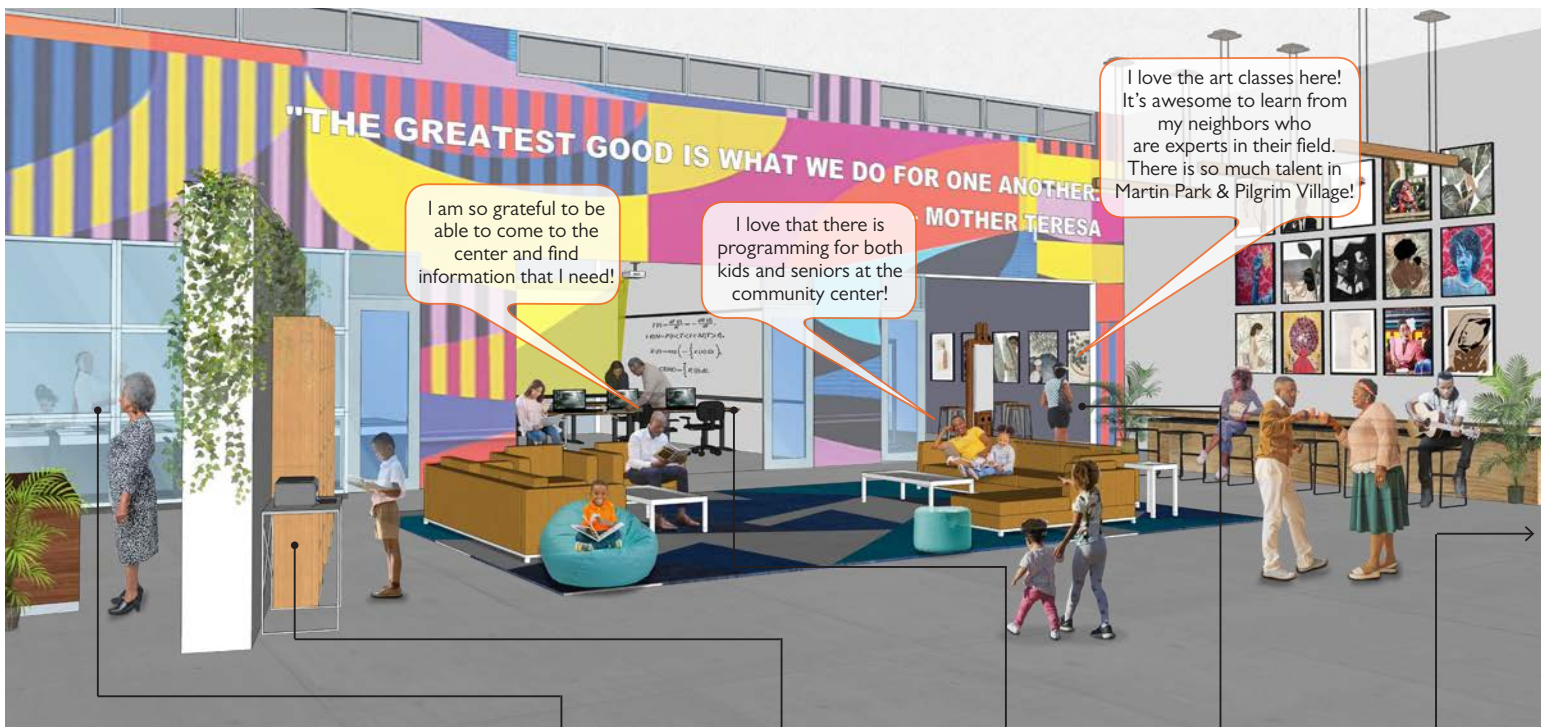
A partnership between Nardin Park Improvement Rock, residents and stakeholders in Nardin Park, and DCDC, this project resulted in a design and planting plan for vacant lots on Yosemite Street and a programming diagram for a vacant house that will be a future IT hub. This community-engaged design process happened in the midst of COVID-19 and pivoted to ensure safety to community members. Surveys were sent to residents to get feedback on the design and follow up conversations contributed to creating the design.

Partner: Nardin Park Improvement Rock Block Club

Martin Park and Pilgrim Village Community Center + Community Garden

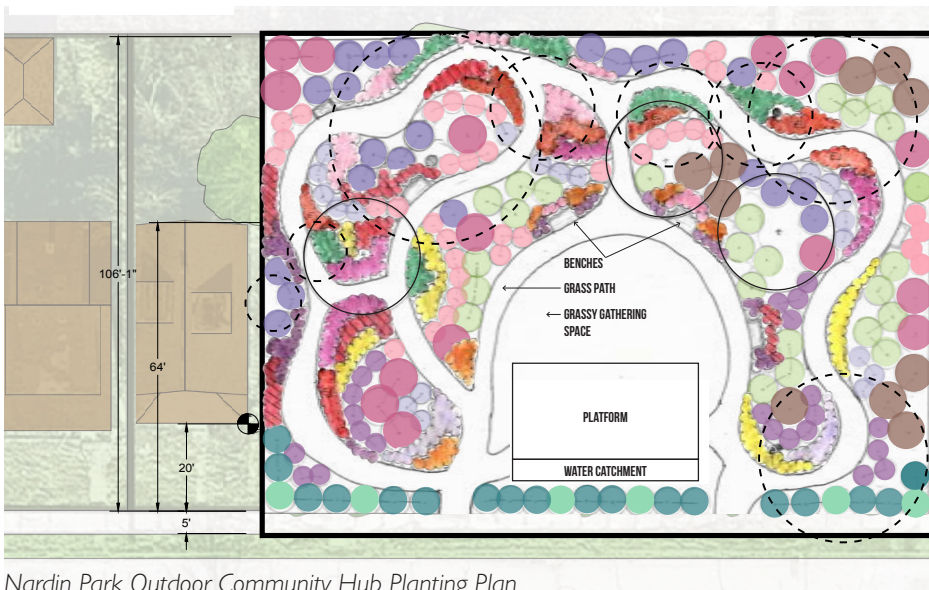
DCDC partnered with New Martin Park District Association and Pilgrim Village (NMPDA and PV) on a community-engaged process to design a community garden and center. This process engaged more than thirty residents and has resulted in a phased plan for both a community garden and a community center. Phase One will allow for NMPDA and PV to build neighborhood capacity and continue to fundraise for future growth. These spaces are meant to be welcoming spaces for both youth and seniors that encourage community relationship building and knowledge exchange

Partners: New Martin Park District Association and Pilgrim Village residents



NMPDA + PV Community Center Rendering





Nardin Park Outdoor Community Hub Planting Plan

Sacred Grounds Detroit

This program of the National Wildlife Federation (NWF) promotes education of our natural spaces and the values of pollinator habitats in the urban setting. In the second year of this program, seven houses of worship were awarded small grants to install pollinator habitats that were designed by DCDC via a collaborative group workshop process.

Partners: National Wildlife Federation, Citadel of Faith, Pure in Heart Missionary Baptist Church, St. Suzanne's Catholic Church, Messiah Covenant Church, Galilee Baptist Church, Detroit Hope Community of Christ, International Miracle Gospel Tabernacle

Southwest Detroit Immigrant and Refugee Center Engagement + Conceptual Design

The Southwest Detroit Immigrant and Refugee Center (SWIRC) provides free and low-cost legal services to those who need them most in the Detroit area. SWIRC recently purchased the property at 329 W Grand Blvd. and worked with DCDC, 4545 Architecture and community stakeholders to envision and design its renovation as a community resource through two key programs: Transitional Family Housing and Small Business Incubator and Co-working Space.

Partners: Southwest Detroit Immigrant and Refugee Center, 4545 Architecture

University Ministry Reflection Garden

University Ministry and Mission Integration partnered with DCDC on a community-engaged design process for a reflection garden on the grounds of Detroit Mercy. The garden will be implemented on the McNichols campus on the grassy area west of the Life Sciences Building. The design of the garden has been informed by a series of conversations with faculty, staff, and students. The garden design, which will be phased over time, will feature native plantings that will engage the senses, foster moments of pause and reflection, and create habitat for butterflies and bees. The garden offers a space to remember those we have lost in the Detroit Mercy community. It will be a place where people on campus can have a quiet moment of peace or meditation as they move through the day as well as a place to gather.

Partner: University of Detroit Mercy

12

COMMUNITY ENGAGEMENT + CAPACITY BUILDING

Kresge American Cities Workshop Series

DCDC worked with The Kresge Foundation American Cities team to design and facilitate workshops with grantee and initiative cohorts in Fresno and Memphis, focusing on community engagement within the constraints of COVID-19. The workshops series provided opportunities for peer-to-peer learning and sharing within each city as well as across the three cities engaged in the program. This cross-pollination has led to additional sharing of strategies for safe and meaningful engagement.

Partner: The Kresge Foundation

Kresge Innovative Projects: Detroit Community-Engaged Design Curriculum

DCDC worked with Kresge and Michigan Community Resources (MCR) to develop a workshop series focused on community-engaged design for KIP:D grant recipients, featuring the work and wisdom of local and national peers. This work will culminate in an audio-visual resource for community-engaged design.

Partners: The Kresge Foundation, Michigan Community Resources



Examples of remote engagement materials created within COVID constraints.

Marygrove P-20 Cradle-to-Career Campus Community Engagement Framework + Campus Planning Engagement Support

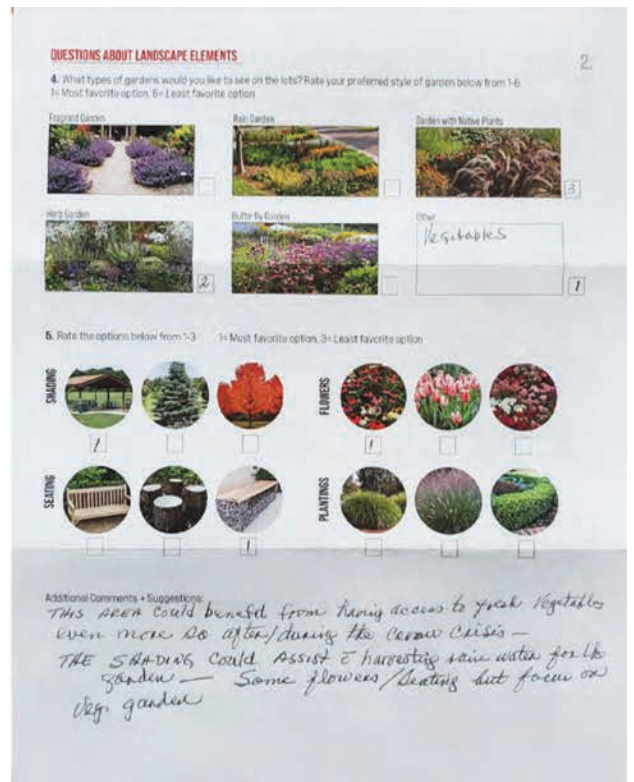
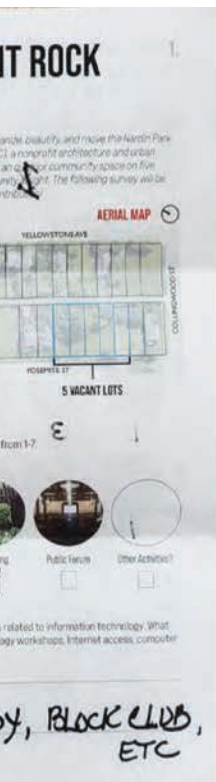
DCDC designed, facilitated, and implemented a community engagement framework to inform the overall cradle-to-career campus concept on Marygrove campus as well as individual partners' programs. DCDC also engaged with the ongoing master planning effort on campus.

Partners: The Kresge Foundation, Marygrove Conservancy, Starfish Family Services, IFF, Detroit Public Schools Community District, University of Michigan

University of California Davis Public Engagement Hub Program and Design Workshops

DCDC worked with Public Scholarship and Engagement (PSE) leadership to design and facilitate a series of workshops with university and community stakeholders to further define and design new programs and spaces supporting civic scholarship to be housed at a forthcoming Public Engagement Hub at Aggie Square in Sacramento.

Partner: Public Scholarship and Engagement, University of California, Davis



14

TEACHING

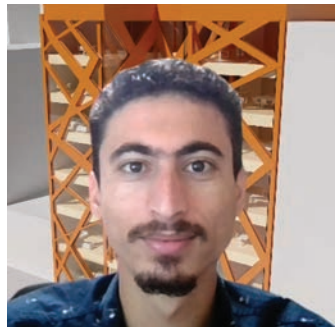
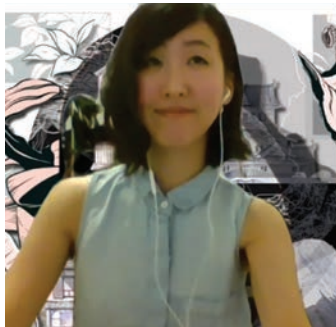
Co-op Program

Every semester DCDC hires two-to-four School of Architecture students who have a co-op work experience as part of their degree. Student designers work alongside DCDC staff learning about community-engaged design by doing. We consider this part of our teaching commitment within the school and for the next generation of community-engaged designers.



2020 Student Designers

Philip Jurkowski
Neteya Tavernier
Joseph Loria
Farinaz Asghari Torkamani
Maria Jose
Allison Jia Yu
Emmanuel Pillah
Galal Abdullah



School of Architecture (SOA) Curriculum

DCDC staff teaches Public Interest Design (PID) architecture studios in the School of Architecture curriculum every year, focusing on a Detroit project with community and collaborative implications. This year's studio focused in the Good Stock area on Detroit's east side. DCDC staff also teach other SOA core courses, included below.

- Community Resilience Hubs: Designing Just Environments, Instructors Josh Budiongan + Ceara O'Leary, Fall 2020
- Site Analysis + Design, Instructor Charles Cross, Fall 2020

Master of Community Development Program

DCDC staff also teach and speak in the Master of Community Development Program. This year multiple staff guest lectured in MCD courses and taught the following courses:

- Introduction to Physical Development, Instructors Christina Heximer + Virginia Stanard, Fall 2020
- History, Theory and Practice of Community Engagement, Instructor Ceara O'Leary, Summer 2020
- Master of Community Development Workshop Series, Coordinator Toni Henry, 2020



Student work by Madison Girolamo

16

KNOWLEDGE SHARING

Presentations, Lectures + Panel Discussions

Landscape Architecture Magazine Panel Discussion, A Plague x Two: Black Designers on the Landscapes of Public Health and Public Violence, June 22, 2020

Michigan ASLA, Design Justice and Community Engagement: A Designer's Role in Landscape Architecture, July 30, 2020

City College of New York, Master of Landscape Architecture Program, "Detroit's Productive Landscapes," October 21, 2020

Harvard Graduate School of Design, Landscape Practices Seminar, Panel on Race + Practice, October 23, 2020

Association of Collegiate Schools of Architecture Conference, Community Design Centers: Community Table Panel Discussion, November 6, 2020

"Considering Language and Word Value," Association for Community Design Annual Conference, September 2020

A New Way Forward: Reimagining the Nonprofit Workplace, "Creative Design Solutions for the Workplace," Co.Act Detroit, panelist, July 2020

Capital Impact Partners, Equitable Development Initiative, "Engaging Residents & Community Stakeholders as part of the Real Estate Development Process, panelist, May 2020

AIA Cincinnati VISION, "Pocket Parks to Policy: Collaborative Practice & Community-Engaged Design," February 2020

"Reimagining the Civic Commons: Detroit Project Summary," National Academies of Sciences, Engineering, and Medicine, Roundtable on Population Health Improvement, The Value of Inclusive Places for Health, Equity, and Well-being Workshop, February 2020

"Value-Based Education: A Case for Biased Pedagogies and Practices in Detroit," Environmental Design Research Association 51st Annual Conference, co-authored with Claudia Bernasconi and Virginia Stanard, April 2020

Guest lecture, Boston Architectural College, "Gateway Fall 2020 | Contested Territories: Design + Justice," November 2020

Presentation, Charrette Venture Group Partners Round Table

Presentation, Salazar Architect, Inc. speaker series, October 2020

"Community Engagement in Times of COVID-19: A Peer-to-Peer Conversation," Webinar, Association for Community Design, December 2020, with Hester Street Collaborative

"Navigating Change," Association of Architecture Organizations, December 2020, with Anne-Marie Lubenau and Ann Yoachim

Pathways to Equity Virtual Program, Module 4: Strategies & Practices, Panel: Community Engagement During These Times, Guest Speaker + Panelist, December 2020

COMMUNITY ENGAGEMENT

IN TIMES OF COVID



...a peer-to-peer conversation...

When it comes to engagement during COVID:
Share one unique challenge you are facing and one success.



Participation in Conferences:

American Society of Landscape Architects, November 2020

Association of Collegiate Schools of Architecture Conference, June 2020

Detroit GIS Day, November 2020

Building the Engine of Community Development in Detroit, 5th Annual Summit, December 2020

Environmental Design Research Association 51st Annual Conference, April 2020

Design Futures Student Leadership Forum + Faculty Convening, January + July 2020

In the past several months, we have attended a wide range of webinars on the topics of community engagement during the pandemic and community resiliency in an effort to integrate lessons into our work at DCDC and in our curriculum.

Papers/Publications:

“Shared, Offsite and Green: Leveraging Neighborhood Stormwater Infrastructure,”
Dichotomy Student Journal, University of Detroit Mercy, 2020 (forthcoming).

“Bridging Needs with Research through Action-Oriented Community Design,”
CONVERGE COVID-19 Working Groups for Public Health and Social Sciences
Research Agenda-Setting Paper, co-authored with Jeff Carney, Ann Yoachim, et al.,
2020

Publications featuring DCDC work:

Katie Swenson, Design With Love: At Home in America, Schiffer Publishing, 2020.
Featuring the Enterprise Rose Architectural Fellowship.

“The Twin Pandemics,” Landscape Architecture Magazine, August 2020, featuring
Charles Cross, Director of Landscape Design

Design Core Guide for Real Estate Development, September 2020

Model D:

Resilient Neighborhoods: These two nonprofits are bringing youth-driven spaces to
SW Detroit, September 2020

A ‘well-spring of creativity, energy, and Detroit hustle’: 28 projects win \$1.9M in
Kresge grants, August 2020

City of Detroit receives \$1M in new investment from Reimagining the Civic
Commons initiative, June 2020

18

KNOWLEDGE SHARING

Boards and Committees:

Association for Community Design, Board Member, Research Committee
Design As Protest, Core Organizer, Field Organizing Committee
Design Future Leadership Forum + Diversity, Equity and Inclusion Cohort Faculty
Dark Matter University, Core Organizer
American Society of Landscape Architects, Member
Michigan Society of Landscape Architects, Diversity, Equity and Inclusion, Committee Member
National Organization of Minority Architects, Member, Faculty Advisor
Black Landscape Architects Network, Member and Treasurer
Fulbright-Hays Fellow
Dunamis Community Development Corporation, Board Member
Denby Neighborhood Alliance, Advisory Committee
Landscape Architecture Foundation Scholarship for Inclusive Community Design, Juror
Cass Avenue Bridge Project Public Art, Committee Member
Cuba Cultural Asset Mapping, Project Advisor
Detroit Eagles Athletic Club, Board Member
Charles H. Wright Museum, Advisory Council Member
University of Detroit Mercy African American Studies Program, Advisory Committee Member
University of Detroit Mercy Master of Community Development Advisory Board
AIA Housing + Community Development Knowledge Community Advisory Group
Enterprise Rose Architectural Fellowship Selection Committee Advisor
Wayne State University Transformative Research in Urban Sustainability and Training (T-RUST)
Graduate Program Advisory Board
Converge, National Science Foundation, Bridging Community Needs and Research through
Action-Oriented Co-Design, Working Group Member
ACSA 109th Annual Meeting Expanding the View, Reviewer
University of Detroit Mercy Strategic Planning Implementation Committee

THANK YOU!

Community Partners

Our work would not be possible without our amazing community partners, whom we work alongside to develop community engagement processes and design projects. We deeply value our ongoing relationships and the trust partners bring to the process.

Funding Partners

We are also thankful for a funding community that supports our work and that of our community partners. We consider our funding partners as thought partners and allies in this work.

In 2020, direct foundation support was provided by:



FORD MOTOR COMPANY FUND

THE KRESGE FOUNDATION



W.K.
KELLOGG
FOUNDATION*

Private donations were provided by:

Catie & Dennis O'Leary

Ronald L. Grzesiak

Anonymous

To donate, visit: www.givecampus.com/schools/UniversityofDetroitMercy/detroit-collaborative-design-center



Detroit Collaborative Design Center

University of Detroit Mercy
School of Architecture

Facebook **@DCDC.UDM**

Instagram **@dcdc_udm**